

An Enemy of the People

By Henrik Ibsen

Directed by Johanna Kasimow

A New Version Adapted by the Ensemble

E.C. Mabie Theatre | UI Theatre Building

Approximate run time is 2 hours and 30 minutes, including intermission.

Please be advised that this production includes strong language, smoking, and haze.

In a small rural town, the economy is flourishing as tourists flock to the local baths, creating palpable optimism in the community. But when a local respected scientist makes a catastrophic discovery that the water supply is contaminated, the future of the town becomes unclear. In a new adaptation, directed by Johanna Kasimow and created with the ensemble, *An Enemy of the People* sparks a tenuous dialogue about truth and the complex navigation of collective responsibility.

The text of this production has been adapted by the ensemble using the first English translation of the play by Eleanor Marx Aveling.

Special thanks to Liz McTernan.

Performances:

Friday, April 18 at 8 p.m.

Saturday, April 19 at 8 p.m.

Sunday, April 20 at 2 p.m.

Thursday, April 24 at 8 p.m.

Friday, April 25 at 8 p.m.

Saturday, April 26 at 8 p.m.

Tickets:

Purchase your tickets in advance through Hancher Box Office by calling 319-335-1160 or online through [their website](#).

The Box Office at the Theatre Building opens one hour prior to the performance, with tickets on an as-available basis, unless the production is sold out.

Individuals with disabilities are encouraged to attend all University of Iowa sponsored events. If you are a person with a disability who requires a reasonable accommodation in order to participate in this program, please contact the Department of Theatre Arts at 319-335-2700 in advance of the event.

An Enemy of the People

Meet the Cast

AN ENEMY OF THE PEOPLE

BY HENRIK IBSEN

A NEW VERSION ADAPTED BY THE ENSEMBLE

DIRECTED BY JOHANNA KASIMOW

MEET THE CAST



Billing | ABBY PAUL*

Abby Paul is a fourth-year undergraduate student double-majoring in Theatre Arts and Cinema. Abby could not have asked for a better final show at the University of Iowa, filled with so much collaboration and love. Some of her previous notable characters at Iowa include Milky White in *Into the Woods*, Goodman in *Men on Boats*, and Barefoot Girl in *rockabye*. It's a bittersweet goodbye, and she could not have asked for a better cast, crew, and production team to go on this crazy journey with.



K. Stockmann | ALICIA PHILADELPHIA**

Alicia Philadelphia is ecstatic to be making her University of Iowa debut! Favorite credits include Beatrice in *Sigh No More*, Elizabeth Lavenza in *Frankenstein*, Norma Valverde in *Hands on a Hardbody*, and Shrek in *Shrek the Musical*. Special thanks to her supportive and loving friends and family, as well as the entire cast and crew of this beautiful production.

*Undergraduate student, **Graduate student

UI Theatre is dedicated to providing hands-on theatre experience for both undergraduate and graduate students.

AN ENEMY OF THE PEOPLE

BY HENRIK IBSEN

A NEW VERSION ADAPTED BY THE ENSEMBLE

DIRECTED BY JOHANNA KASIMOW

MEET THE CAST



M. Kill | ANDREW REECE*

Andrew Reece is a fourth-year undergraduate Theater Arts and Communications Studies student. Andrew has participated in several UI Theater productions including *Gwenevere*, *And Then*, *Journey to the Lovely Empire*, *Braided Sorrow*, *In the Red and Brown Water*, and finally *An Enemy of the People*. Andrew will be relocating to Atlanta, GA to pursue an acting career and pursue opportunities in TV hosting and social media. Andrew thanks UI Theatre for its incredible program and mentorship.



Aslaksen | DALE LEONHEART**

Dale is a first-year MFA candidate in Acting. She is thrilled to tell this story alongside such talented and thoughtful artists.

*Undergraduate student, **Graduate student

UI Theatre is dedicated to providing hands-on theatre experience for both undergraduate and graduate students.

AN ENEMY OF THE PEOPLE

BY HENRIK IBSEN

A NEW VERSION ADAPTED BY THE ENSEMBLE

DIRECTED BY JOHANNA KASIMOW

MEET THE CAST



Dr. Stockmann | JOEY LEPIRE*

Joey Lepire is a fourth-year Theatre Arts major. He has previously been in the university productions *String*, *The Lazaretto*, *Something Rotten!*, *BOOTH*, *Macbeth*, *Spells for Going Forth by Daylight*, and *Uh-Oh!*. He wants to thank the tremendous cast, crew and creative team for their patience, brilliance, and friendship. He also wants to thank his family for all their love and support, especially his mother Susan and his brother Brett, who come to every one of his shows at least twice.



P. Stockmann | LEAH URZENDOWSKI**

Leah was first seen on the UIowa stage in *Marie Antoinette*. Before that, Leah was an ensemble member of The Neo-futurists from 2011-2021. She regularly wrote, directed, and performed in *Too Much Light Makes The Baby Go Blind* and *The Infinite Wrench*.

Performer/choreographer/devisor credits include: *Burning Bluebeard*, *Miss Neo Pageant*, *The? Unicorn? Hour?* (Neo-futurists). Choreography credits include: *Lord of The Flies* (Steppenwolf), *The Magic Play* (Goodman), *Ivywild* (Hypocrites), and Jeff award winner for *All Quiet on the Western Front* (Red Tape). Performer credits include: *500 Clown Trapped*, *500 Clown Frankenstein* (500 Clown), *Hunchback* (Redmoon). Thank you for witnessing live theatre. Now, do it again.

*Undergraduate student, **Graduate student

UI Theatre is dedicated to providing hands-on theatre experience for both undergraduate and graduate students.

AN ENEMY OF THE PEOPLE

BY HENRIK IBSEN

A NEW VERSION ADAPTED BY THE ENSEMBLE

DIRECTED BY JOHANNA KASIMOW

MEET THE CAST



Hovstad | RAPHAEL THOMÉ**

Raphael Thomé is a first-year MFA acting candidate. Born in Rio de Janeiro, Brazil, he worked in TV shows and movies such as *Pelé – Birth of a Legend* and *The Text*, a Cola-Cola short. In 2018, he came to the United States to pursue an undergraduate degree in Film Production at Cal State University Northridge. There, he got involved in stage productions and had a chance to play Tartuffe, Laertes in *Hamlet*, and direct Ionesco's *The Killing Game*. In Iowa, he was seen as Fersen in *Marie Antoniette*, and now he is thrilled to play Hovstad alongside such passionate actors.



Horster | SARA ALVIDREZ*

Sara Alvidrez is a fourth-year Theater Arts and Entrepreneurial Management Student. She is portraying Horster and graduating this May. Sara is incredibly thankful that her last show at the university is something so unique, special, and prophetic. She reminisces about her first time on the Mabie Stage as an Angel in *Smile Medicine*. You may have also seen her written works *the Unpacking*, and *I Hate You Kyle Busch*, in the Ten-Minute Play Festival. Somehow she's also had time to direct at Iowa, such as *Reflections*, and *Day Fades into Night*. She wants to thank the AEOTP team for all their support and dedication.

*Undergraduate student, **Graduate student

UI Theatre is dedicated to providing hands-on theatre experience for both undergraduate and graduate students.

AN ENEMY OF THE PEOPLE

BY HENRIK IBSEN

A NEW VERSION ADAPTED BY THE ENSEMBLE

DIRECTED BY JOHANNA KASIMOW

MEET THE CAST



Townsperson | AVA SLATER*

Ava is a first-year undergraduate student double majoring in English Publishing and Theatre Arts. She could not think a better show to be making her University of Iowa debut with! It is a dream come true to share the big stage with such incredible cast and crew. She wants to thank her friends and family for being ***almost*** as excited as she is.



Townsperson | FABIENNE RINK**

Fabienne is an MFA Literary Translation student from Germany with a love for the arts, especially music and theatre. Since early childhood, she participated in concerts, sang on CDs, and pursued acting in a youth theatre group. After her BA in Journalism and MA in Literary & Cultural Studies in Dortmund, Germany, she found her way back on stage at the University of Iowa Theatre Department. A few of her past shows include *Lil G: A Gatsby Remix* in the New Play Festival 2023, *American Rusalki* in Fall 2023 and *Leeches* in the New Play Festival 2024. She's excited to be part of AEOTP as her last show, and thankful for this opportunity working alongside such a talented cast and great people.

*Undergraduate student, **Graduate student

UI Theatre is dedicated to providing hands-on theatre experience for both undergraduate and graduate students.

AN ENEMY OF THE PEOPLE

BY HENRIK IBSEN

A NEW VERSION ADAPTED BY THE ENSEMBLE

DIRECTED BY JOHANNA KASIMOW

MEET THE CAST



Townsperson | MARY MAYO

Mary Mayo is on the faculty of the department of Theatre Arts. She is thrilled to be part of this very special production.



Townsperson | GLEISSON SANTOS**

Gleisson is a second-year MFA student in Literary Translation, an educator, and an interdisciplinary artist. He is thrilled to be part of such a brilliant production.

*Undergraduate student, **Graduate student

UI Theatre is dedicated to providing hands-on theatre experience for both undergraduate and graduate students.

An Enemy of the People

Meet the Creative Team

AN ENEMY OF THE PEOPLE

BY HENRIK IBSEN

A NEW VERSION ADAPTED BY THE ENSEMBLE

DIRECTED BY JOHANNA KASIMOW

MEET THE CREATIVE TEAM



Director | JOHANNA KASIMOW



**Fight Director/Fight Choreographer/Violence Designer
| PAUL KALINA**

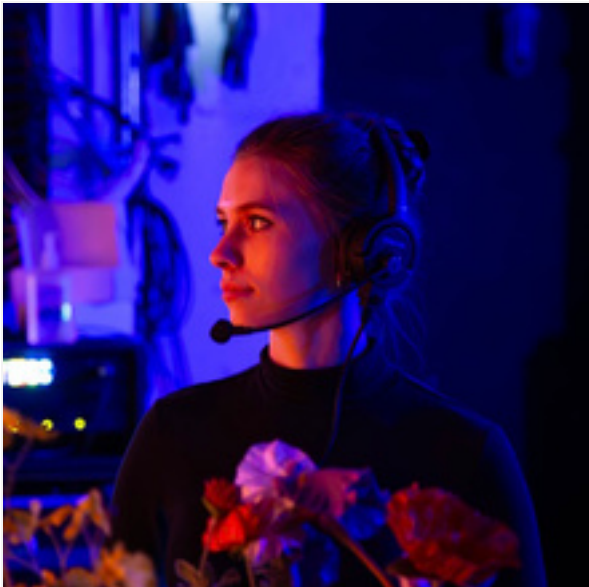
*Undergraduate student, **Graduate student

UI Theatre is dedicated to providing hands-on theatre experience for both undergraduate and graduate students.

AN ENEMY OF THE PEOPLE
BY HENRIK IBSEN
A NEW VERSION ADAPTED BY THE ENSEMBLE
DIRECTED BY JOHANNA KASIMOW
MEET THE CREATIVE TEAM



Dramaturg | MARGARET SMITH**



Stage Manager | MAGGIE MCCLELLAN**

Maggie McClellan is a second-year Stage Management MFA candidate. At the University of Iowa she has stage managed *Così Fan Tutte* and *Anti-Hero: Revenge of the Swifties* and assistant stage managed *Into the Woods* and *L'amico Fritz*. Professional credits include Stage Manager for Mixed Blood Theatre Company (*Full Range*), Riverside Theatre (*Everybody*, *The Roommate*, *A Walk in the Woods*, *The Weir*, *The Niceties*), Interlochen Center for the Arts (*A Midsummer Night's Dream*, *The Miraculous Journey of Edward Tulane*), and Willow Creek Theatre Company (*[Title of Show]*). Maggie would like to thank her family for their love and support.

*Undergraduate student, **Graduate student

UI Theatre is dedicated to providing hands-on theatre experience for both undergraduate and graduate students.

AN ENEMY OF THE PEOPLE
BY HENRIK IBSEN
A NEW VERSION ADAPTED BY THE ENSEMBLE
DIRECTED BY JOHANNA KASIMOW
MEET THE CREATIVE TEAM



Scenic Designer | CJ JOHNSON**



Costume and Makeup Designer | CATHY PARROTT

Cathy Parrott (2001 B.A.) joined Iowa's theatre faculty as Assistant Professor of Costume Design in the fall of 2024. Before returning to Iowa, she spent nearly two decades as a New York City-based costume designer. Cathy's Broadway associate design credits include: Alicia Keys' *Hell's Kitchen*, Berry Gordy's *Motown; the Musical*, *On Your Feet! The Story of Emilio & Gloria Estefan*, and *Diana: The Musical*. Her film assistant design credits include: *The Greatest Showman*, Lin Manuel Miranda's *In the Heights*, and *Spirited* starring Will Ferrell and Ryan Reynolds. A native of Manchester, Iowa, Cathy earned her BA from the University of Iowa and MFA from the University of Georgia. She is a proud union member of United Scenic Artists Local 829. Special thanks to her student design team Chelsea and Ro!!

*Undergraduate student, **Graduate student

UI Theatre is dedicated to providing hands-on theatre experience for both undergraduate and graduate students.

AN ENEMY OF THE PEOPLE
BY HENRIK IBSEN
A NEW VERSION ADAPTED BY THE ENSEMBLE
DIRECTED BY JOHANNA KASIMOW
MEET THE CREATIVE TEAM



Media Designer | CHLOE COBB**



Sound Designer/Lighting Designer | SØREN OLSEN**

*Undergraduate student, **Graduate student

UI Theatre is dedicated to providing hands-on theatre experience for both undergraduate and graduate students.

AN ENEMY OF THE PEOPLE
BY HENRIK IBSEN
A NEW VERSION ADAPTED BY THE ENSEMBLE
DIRECTED BY JOHANNA KASIMOW
MEET THE CREATIVE TEAM



Intimacy Director | CRISTINA GOYENECHÉ



Assistant Stage Manager | ELLA CROSBY*

Ella is a second-year undergrad majoring in Theatre Arts and English and Creative Writing. This is her fourth show at Iowa, and she is so excited to be a part of the team for *An Enemy of the People*. You may have recently seen her working as a production assistant for Iowa Director's Festival this semester and stage managing for *GOWANUS/DEGENERATES* last semester. She wants to thank the amazing cast and creative team for putting together a truly unique show and would like to thank her family and friends for always supporting her and putting up with her busy theater schedule. She hopes you enjoy the show!

*Undergraduate student, **Graduate student

UI Theatre is dedicated to providing hands-on theatre experience for both undergraduate and graduate students.

AN ENEMY OF THE PEOPLE

BY HENRIK IBSEN

A NEW VERSION ADAPTED BY THE ENSEMBLE

DIRECTED BY JOHANNA KASIMOW

MEET THE CREATIVE TEAM



Assistant Costume Designer | BRODY KIVETT*

Brody Kivett is a fourth-year student majoring in Theatre Arts, focusing on acting and comedy studies. This is Brody's 8th production at the university, some past roles include Candy Delaney (& *Tell Sad Stories of the Death of Queens*), Malcolm (*Anti-Hero: Revenge of the Swifties*), and playwright of *UH-OH!* This is Brody's first credit as an (assistant) costume designer here at the university. To my mom, dad, two sisters, and cat Nigel, thank you for your endless love and support on my journey as an artist. Enjoy the show!



Assistant Sound Designer | ADAM DETERS*

*Undergraduate student, **Graduate student

UI Theatre is dedicated to providing hands-on theatre experience for both undergraduate and graduate students.

AN ENEMY OF THE PEOPLE

BY HENRIK IBSEN

A NEW VERSION ADAPTED BY THE ENSEMBLE

DIRECTED BY JOHANNA KASIMOW

MEET THE CREATIVE TEAM



Script Assistant | **ANTHONY COURANT***

*Undergraduate student, **Graduate student

UI Theatre is dedicated to providing hands-on theatre experience for both undergraduate and graduate students.

An Enemy of the People

Meet the Crew

AN ENEMY OF THE PEOPLE
BY HENRIK IBSEN
A NEW VERSION ADAPTED BY THE ENSEMBLE
DIRECTED BY JOHANNA KASIMOW

Wardrobe Crew Captain	Luis Avalos*
Deck Crew Captain	Bella Hohenadel*
Media Board Operator	Charlie Duffy*
Light Board Operator	Audrew Michaels*
QLab Operator	Colin Kiernan*
Run Crew – Wardrobe	Jordan Kinney*
	Alexis Wartschlager*
	Hannah Siefken*
	Rai San Martin Montero*
Run Crew – Deck	Creyton Conrey*
	Isaac Heide*
	Jacob Miller*
	Chase Hohmann*
Wardrobe Associate	Nat Payán
Production Lab Teaching Assistant	Bonnie Ruble**

*Undergraduate student, **Graduate student

UI Theatre is dedicated to providing hands-on theatre experience for both undergraduate and graduate students.